

Rubio[®]
MONOCOAT

RUBIO MONOCOAT

Ambachtenstraat 58 | BE-8870 Izegem

Tel: +32 (0) 51 30 80 54 | Fax: +32 (0) 51 30 99 78

info@rubimonocoat.com | www.rubimonocoat.com

Rubio[®]

EASYBOND, THE MOST UNIVERSAL
PARQUET ADHESIVE ON THE MARKET !

THE RUBIO® EASYBOND RANGE

› RUBIO® EASYBOND – 16 KG BUCKET

New generation one-component parquet adhesive for almost all wood types and all substrates, based on silane-polymer technology.

› RUBIO® EASYBOND - 290 ML TUBE

Gluing skirting boards and sealing seams.

› RUBIO® EASYPRIMER AQUA – 5 L BOTTLE

Bonding additive and fixative on porous, non-porous and smooth substrates.

› RUBIO® EASYPRIMER 2C EPOXY – SET 5 KG

Apply 1 layer as a screed hardener for poor quality substrates. From the second layer, it acts as a moisture barrier. It is compulsory for use on screeds with underfloor heating as well as granulating and anhydrite screeds. (set 2 x bottle 2,5 kg)

› RUBIO® EASYFLOW – 25 KG BAG

Levelling from 3 to 15 mm.

› RUBIO® EASYFLOW-F – 25 KG BAG

Levelling up to 30 mm and floors with underfloor heating.

Powered by **Rubio®**
MONOCOAT



RUBIO® EASYBOND, A NEW INNOVATION FROM RUBIO® MONOCOAT

Since 2002 Rubio® Monocoat has been undergoing an unprecedented advance not only on its home market in Belgium but in more than 76 countries worldwide. Rubio® Monocoat oil protects and colours wood in one single coat thanks to its innovative molecular technology. Annually, well over 30 million m² of wood is treated with Rubio® Monocoat oil, from the Weissmann Museum in Minnesota (USA) to the benches of the Dutch Railways. We are now extending our range for the demanding parquet installer and are launching a universal parquet adhesive.

“A number of priorities were set in developing our EasyBond parquet adhesive. We aimed for a high-quality parquet adhesive for universal use. The parquet adhesive was developed according to silane-polymer technology but without softening agents, isocyanates or solvents. Extensive tests were carried out both in the laboratory and on actual sites where we looked at how easy it was to comb out, resistance, etc., always taking into account the top quality that we were envisaging.”

Jan D'Alleine, R&D Manager and inspirer of Rubio® EasyBond



“One of the reasons for the huge success of our Rubio® Monocoat oil is that the people will have a perfect view of the promised result of “colouring and protecting in one layer”. Our products will then also sell themselves. Adhesive is, however, not a visual product and its importance is often underestimated. The correct adhesive is, however, crucial to the floor's durability as this will determine the quality of the floor in the long term. Choosing Rubio® EasyBond parquet adhesive is choosing quality in the long term and hence opting for satisfied customers. And is this not every parquet installer's dream?”

Gino Dewaele of Technical Sales with 30 years' experience as a parquet installer



WHERE DOES RUBIO® EASYBOND MAKE THE DIFFERENCE?

Parquet adhesive is currently often sold based on price. You cannot see the adhesive in the end result. We at Rubio® Monocoat see this differently. Rubio® EasyBond new generation one-component parquet adhesive based on silane-polymer technology aims to make a difference on two levels. We first of all aim to make your life easy: one parquet adhesive for almost all wood types and substrates makes the choice very easy for you. Easy also because there is no danger of damage to the surface finish of your parquet.

You can rest assured even in the long term. Rubio® EasyBond is extremely durable and guarantees a long-term effective bond.

- ▶ Universal use for all wood types and all situations
- ▶ Durable, tough and elastic adhesive without softening agents
- ▶ High-quality alternative for two-component PU adhesive
- ▶ Lasting sound insulation
- ▶ Ecologically responsible – 0% VOC
- ▶ High resistance and hiding power
- ▶ Superior adhesion
- ▶ No risk of damage to the surface finish
- ▶ Fast and durable hardening
- ▶ Fulfills almost all recognized norms and tests



UNIVERSAL USE – ALL WOOD TYPES, ALL SITUATIONS

Don't give it another thought - Rubio® EasyBond makes it easy. The adhesive is suitable for almost all wood types and all substrates. Including solid and engineered parquet as well as sub-parquet, end-grain wood, cork and other challenging wood types. This new generation of adhesive takes the best from everything thus combining important properties such as strength and elasticity in the same adhesive, **and complies with the "new" standard ISO 17178.**



DURABLE, TOUGH AND ELASTIC ADHESION WITHOUT SOFTENING AGENTS

Your customer wants a nice floor that will stand the test of time and so will not start to warp or form seams. This is precisely why we chose an adhesive with no softening agents and that is tough and elastic, two qualities that make for a durable parquet adhesive.



HIGH-QUALITY ALTERNATIVE FOR TWO-COMPONENT PU ADHESIVE

A parquet adhesive whereby quality is the top priority often calls for a two-component polyurethane adhesive due to the fast hardening, very good adhesion and its tough and elastic character. Rubio® EasyBond is the perfect alternative: it offers the same advantages without the inconveniences of a 2-component PU adhesive. It consists of one component, there are no odours, left-over adhesive is easy to remove from the floor and there are no black hands or isocyanates in the adhesive so no allergic reactions of the skin.



LASTING SOUND INSULATION

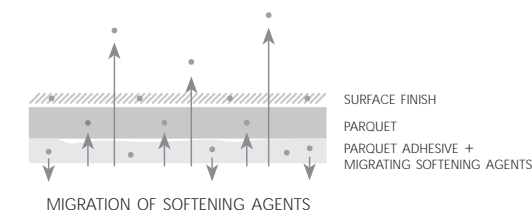
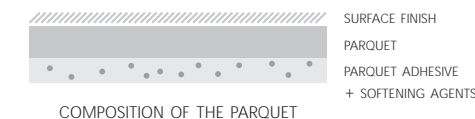
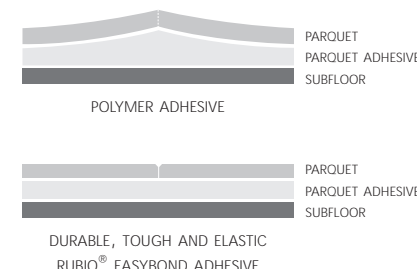
Complies with the following norm: 12kB-DIN EN150 717-2



NO SOFTENING AGENTS = NO PREMATURE AGEING

Softening agents are oily liquids that are added to synthetics in order to make these more flexible. This can be compared with adding water to clay whereby the clay becomes suppler. Softening agents make adhesive very elastic and cheap. The adhesive loses its elasticity over time due to the migration of the softening agents. This process is accelerated in the case of underfloor heating.

Rubio® EasyBond parquet adhesive contains no softening agents but has a high polymer content making the adhesive harder but also more durable with a greater adhesive capacity. The fact that Rubio® EasyBond contains no softening agents means there is no migration, the adhesive's composition does not change so there is no risk of premature ageing. This makes the parquet adhesive extremely suitable for underfloor heating.



EVERYTHING REMAINS IN ITS PLACE

An adhesive that is too elastic will give the wood too much flexibility and an adhesive that is too stiff will break. The tough and elastic composition of Rubio® EasyBond gives wood just enough flexibility but not so much that the wood starts to become distorted or cupped. This type of adhesive is also easy to sand and can also be used as a filler.



ECOLOGICALLY RESPONSIBLE – 0% VOC

Rubio® EasyBond parquet adhesive is solvent free and so is not hazardous to the environment. The adhesive also contains no isocyanates so the danger of skin allergies is minimal. Adhesive residue can simply be removed from the bucket after hardening whereby the empty bucket can be perfectly recycled.



HIGH RESISTANCE AND HIDING POWER

The right choice of rheological additives makes for a high level of resistance. This will allow the adhesive to move through so the grains and the adhesive strips remain nicely upright resulting in a nice even surface for the parquet in combination with easy hideability.





SUPERIOR ADHESION

Rubio® EasyBond was subjected to all possible tests both in the laboratory and on actual sites. We therefore venture to say with certainty and the necessary pride that Rubio® EasyBond offers superior adhesion thanks to its high polymer content. In normal circumstances, it is therefore also not necessary to first apply a primer to a healthy substrate. Consult the technical data sheet for more details.



NO RISK OF DAMAGE TO THE SURFACE FINISH

Rubio® EasyBond contains no softening agents meaning there is no migration and the adhesive's composition does not change. This is why you don't need to worry about damage to the surface finish afterwards as the adhesive simply contains nothing that can migrate to the wood. Very reassuring, isn't it?



FAST AND DURABLE HARDENING

The parquet can be polished after 12 hours, saving a great deal of time compared to other adhesives. Because there are no softening agents in the adhesive, these cannot migrate and we can guarantee durable adhesion.



FULFILLS ALMOST ALL RECOGNIZED NORMS AND TESTS



CONSUMPTION & SPREADERS



Mosaic parquet and tapis floors
consumption ca. 800 g/m² – spreader B7



Unfinished or pre-processed multi-layer parquet or 15 mm strips of solid parquet
consumption ca. 1.000 g/m² – spreader B15



22 mm strips of solid parquet or 23 mm end grain parquet
consumption ca. 1.200 g/m² – spreader B16

Solid or composite planks, large format
consumption ca. 1.200 g/m² – spreader B16

The consumption details are only an indication and depend on the type of substrate and preparation.



AVAILABLE IN A CARTRIDGE

Rubio® EasyBond is also available in a 290 ml cartridge for gluing skirting boards, sealing seams around heating pipes, door frames, doorsteps, tiles, etc.

Consult the technical data sheet for more details.





PREPARATION PRODUCTS

Rubio® Monocoat makes this possible through the development of one parquet adhesive for all wood types. We also offer a range of products for preparing the substrates.

RUBIO PRIMERS AND MOISTURE BARRIERS

The quality of the screed is crucial for the adhesion or the levellers. When you choose Rubio® EasyBond parquet adhesive, you need not prime in the case of a healthy, strong, porous or non-porous substrate. Rubio® Monocoat has a range of primers offering a solution for each substrate.

When should you definitely prime?

- › Securing the substrate and the substance.
- › Before applying a self-levelling compound layer on any substrate.
- › On smooth, non-porous substrates such as e.g. ceramic tiles.
- › A primer is always required on anhydrite screeds using our Rubio® EasyPrimer 2C Epoxy.
- › In the case of underfloor heating, use Rubio® EasyPrimer 2C Epoxy.
- › Always apply two layers of Rubio® EasyPrimer 2C Epoxy as a moisture barrier, for substrates with a residual moisture content up to a maximum of 8%.

RUBIO EASYPRIMER – AQUA is a high-quality, water-based primer used as a bonding additive and fixative on porous and non-porous substrates. This primer can also be used on difficult and smooth substrates such as ceramic tiles (first rough this up with a diamond wheel) to improve adhesion with Rubio® EasyFlow, Rubio® EasyFlow-F self-levelling compound or Rubio® EasyBond parquet adhesive.

- › 0% VOC
- › Water-based
- › Almost odourless
- › Minimum foam formation
- › Packaging: 5 l bottle
- › Colour: yellow (promotes ease of use)
- › Apply using a brush, block brush or primer roller.
- › Consumption: 100- 200 g/m² per layer to be applied in one or two layers depending on the porosity.



Rubio® EasyPrimer Aqua
Bonding additive and fixative for porous and non-porous substrates as well as difficult and smooth substrates such as ceramic tiles.

RUBIO EASYPRIMER 2C – EPOXY is a high-quality water-based two-component epoxy primer. This primer is almost odourless and contains no VOC. In one layer, the primer can be used as a screed hardener for poor quality substrates. From the second layer, it functions as a moisture barrier. Rubio® EasyPrimer Epoxy is compulsory when used on screeds with underfloor heating as well as granulating and anhydrite screeds and when renovating existing floors with old residual adhesive.

- › 0% VOC
- › Viscous layer
- › Fast drying
- › Open time: ca. 1 hour
- › Colour Epoxy A: green/Epoxy B: grey
- › Consumption: 150-250 g/m² per layer, depending on porosity.
- › Packaging: Set 2 x 2,5 kg bottles
- › Almost odourless
- › Suitable for underfloor heating
- › Simple 1:1 mixture
- › Apply with brush, block brush or primer roller.



Rubio® EasyPrimer 2C Epoxy
Recommended for underfloor heating, anhydrite screeds, renovation of old floors with residual adhesive and as a screed hardener for poor quality substrates. In two layers, it serves as a moisture barrier.

SUITABLE TOOLS:



Primer roller, green
Suitable for rough substrates and flat absorbent substrates.



Primer roller, white
Suitable for flat absorbent substrates and tiled floors.



Consult the technical data sheet for more details.



RUBIO SELF-LEVELLING COMPOUND

Rubio® EasyFlow self-levelling compound are for universal use and ideal as preparation for placing parquet and with other hard and soft floor coverings. These can, after priming, be used on all absorbent (mineral) substrates such as cement-bound and anhydrite screeds but also on non-absorbent substrates such as ceramic tiles. These are available in two versions:

› RUBIO® EASYFLOW

For levelling from 3 to 15 mm.

› RUBIO® EASYFLOW-F

For levelling up to 30 mm and floors with underfloor heating.

Rubio® EasyFlow self-levelling compound distinguish themselves by being easy to mix without raising any dust. They also need less water than traditional self-levelling compound so they dry out quicker. The EasyFlow self-levelling compound remains completely homogeneous right up to the end.

RUBIO EASYFLOW – from 3 to 15 mm

Rubio® EasyFlow is a self-levelling cement-bound levelling material of high-quality aluminium cement, aggregates, additional binders and chemical additives. It is a premixed dry powder developed for use as a thin levelling floor.

› Application: To be applied in one treatment over a thickness of 3 to 15 mm. Smooth the self-levelling compound out with a rustproof spatula and vent with a de-aerating roller. It is normally possible to walk over the floor after 1 or 2 hours. Subjecting it to a full load is possible depending on climatic circumstances. After 24 hours the parquet can be laid. Any residual moisture from the self-levelling compound will react with the self-levelling compound.

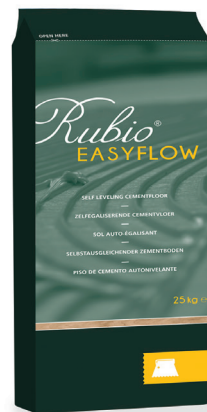
› Subfloor: Rubio® EasyFlow must be applied on a well-prepared subfloor. Dust, grease or weak materials should be removed. Priming should always be carried out before levelling.

› Min. floor temperature: +6° C

› Adding water: 19% (4,75 l / 25 kg bag)

› Material consumption: ca. 1.75 kg per mm of thickness/m²

› Hardening time: Walkable after 1 or 2 hours / The parquet can be laid after 24 hours. Any residual moisture from the self-levelling compound will react with the self-levelling compound if the addition of water (19% = 4,75 l / 25 kg bag) was exactly fulfilled.



Rubio® EasyFlow
Self-levelling cement-bound
levelling material.

Consult the technical data sheet for more details.

RUBIO EASYFLOW – F (fibre-reinforced) – to 30 mm and with underfloor heating

Rubio® EasyFlow-F is a self-levelling and fibre-reinforced cement-bound levelling material of high-quality aluminium cement, aggregates, additional binders and chemical additives. It is a premixed dry powder developed for flooring and is also suitable for underfloor heating.

› Application: To be applied in one treatment over a thickness of 3 to 30 mm. Smooth the self-levelling compound out with a rustproof spatula and vent with a de-aerating roller. It is normally possible to walk over the floor after one or two hours. Subjecting it to a full load is possible depending on local circumstances. The parquet can be laid after 24 hours. Any residual moisture from the self-levelling compound will react with the self-levelling compound.

› Subfloor: Rubio® EasyFlow-F must be applied on a well-prepared subfloor. Dust, grease or weak materials should be removed. The fluidity of the material is very good and provides a smooth surface ready for placing floor covering (such as tiles, laminate, carpets, parquet, etc.).

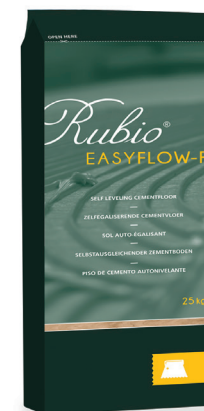
› Min. floor temperature: +6° C

› Material consumption: ca. 1.75 kg per mm thickness/m²

› Adding water: 18% (4,5 l / 25 kg bag)

› Hardening time: Walkable after 1 or 2 hours. The parquet can be placed after 24 hours. Any residual moisture from the self-levelling compound will react with the self-levelling compound if the addition of water (18% = 4,5 l / 25 kg bag) was exactly fulfilled.

Consult the technical data sheet for more details.



Rubio® EasyFlow-F
Self-levelling and fibre-reinforced
cement-bound levelling material.

SUITABLE TOOLS:

› The stainless spreader for applying Rubio® self-levelling compound (large area) with a teeth profile that can be clipped into the welded terminal. It fitted with two continuously height adjustable sliding pivots for equally adjusting each desired layer thickness of 36 mm.



› The de-aerating roller is a synthetic cylinder with 35 mm long teeth, splash protection and nickel-plated brace with hollow synthetic handle.



› Spiked soles with steel spikes, to walk on fresh layers of screed without leaving a trace.



RUBIO EASY 1.2.3 STEP-BY-STEP PLAN

1



CHECK THE AMBIENT TEMPERATURE AND HUMIDITY

The masonry and the layers of plaster must have a moisture content of $\leq 5\%$. The tiling must be pointed and dry just like the paintwork. The recommended air humidity is between 50 – 60%. This can be measured using a hygrometer. The residual moisture content of the screed depends on the type of screed:

- › Cement-bound (without underfloor heating): 2.5%
- › Cement-bound (with underfloor heating): 1.5%
- › Anhydrite (traditional without underfloor heating): 1%
- › Anhydrite (traditional with underfloor heating): 0.6%
- › Anhydrite cast floor: 0.6%

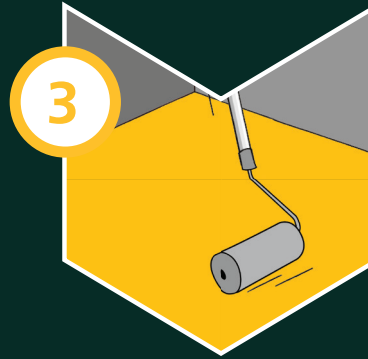
2



PREPARING THE SUBSTRATE

- › Flat
- › Dry
- › Grease-free
- › Free from cracks
- › Physically solid

3



RUBIO EASYPRIMER I OPTIONAL

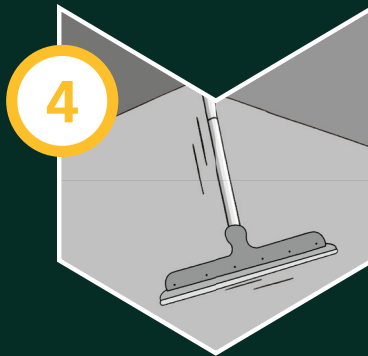
Rubio® EasyPrimer Aqua

- › Bonding additive and fixative on difficult and smooth substrates such as ceramic tiles.

Rubio® EasyPrimer 2C Epoxy

- › Recommended for underfloor heating, anhydrite screeds, renovating old floors with residual adhesive and as screed hardener for poor quality substrates.
- › It serves in two layers as a moisture barrier.

4



RUBIO EASYFLOW(-F) I OPTIONAL

Rubio® EasyFlow

- › Self-levelling, cement-bound levelling material for levelling up to 15 mm.

Rubio® EasyFlow-F

- › Fibre-reinforced self-levelling, cement bound levelling material for levelling up to 30 mm and floors with underfloor heating.

5



GLUING WITH RUBIO® EASYBOND

- › Open time: 45 minutes
- › Spreaders: B7- B15- B16
- › Adhesive temperatures: at least 15° C for optimal processing.
- › Packaging: 16 kg bucket or 290 ml cartridge (493 gram) for gluing skirting boards and sealing seams.
- › Drying time: The floor can be polished or taken into use after 12 hours depending on the climatic conditions and thickness of the adhesive layer (23° C / 60% relative humidity).

6



LAYING THE PARQUET

- › Remove adhesive stains using Rubio® Monocoat Cleaner before they dry.
- › No damage to the surface finish.
- › Hardened residual adhesive can only be removed mechanically.
- › Clean material using Rubio® Monocoat Cleaner.
- › Wash hands simply using soap and water.
- › Finish the parquet using Rubio® Monocoat oil as required.

More questions? Contact your Rubio® EasyBond distributor.

For the further processing of your parquet and all other wood types, we recommend our wide range of oils. More information at www.rubiomonocoat.com



Rubio®
MONOCOAT

PROTECTS AND COLOURS YOUR WOOD IN ONE LAYER

TAKE A LOOK AT THE COMPLETE RANGE ON
WWW.RUBIOMONOCOAT.COM



Photo: Project Erasmus University - The Netherlands